



TIMBER TALK

Your Voice for South Carolina Timber Harvesting

2ND QUARTER 2024

Teachers Are Students for Sustainable Forestry

By Crad Jaynes, SCTPA President

The 2024 SC Sustainable Forestry Teachers Tour, or as I like to call it, SC Sustainable Forestry Teachers Experience, was conducted the week of June 17 – 21. The tour was based out of Aiken for our second year in the area.

Despite being down on teacher quantity with only seventeen, it was high in quality. We had a great week being with teachers from around the Palmetto state to teach, show, demonstrate and provide the facts about sustainable forestry, the Sustainable Forestry Initiative, private forest management, reforestation, timber harvesting, wildlife and wildlife habitat management and forest products industry for solid wood and pulp and paper products. The teachers got a full dose of how important our \$23 billion industry is to our state.

This tour's group was a fun bunch and eager to learn about our industry and witness firsthand at the various tour stops how and why sustainable forestry is practiced. As I told them,

we are going to treat “y'all like kings and queens” and not a “bunch of dang ole teachers.” I was excited about their enthusiasm, engagement and willingness to ask questions and desire to understand the different facets of the forestry and forest products industries.



Emily Oakman, Forestry Association of SC, tour coordinator, and I accompanied the tour for the full week. Matt Schnabel, Project Learning Tree (PLT) educator with the SC Forestry Commission was with us through Wednesday and Traclynne Allison, Domtar Paper Company Forester and Phillip Rabon, Teachers Tour Steering Committee member were with the tour all week. Thanks to Emily for heading the tour and Matt, Traclynne and Phillip helping with the tour stops and activities.

The teachers had to do online work and preparation before the tour to be acquainted with forestry terms and gain a basic understanding of what they would see and hear on the tour. The teachers receive continuing education credit and even graduate credit for attending the weeklong experience.

The group gathered Monday

(Continued on page 2)

Inside ...

2024 SC Sustainable Forestry Teachers Tour	Cover
Bipartisan Coalition - Fix Our Forest Act	2
TEAM Safe Trucking “You can lead a horse ...”	6
SC Trucking Regs	8
2024 ALC DC Fly-In	9
As We See It ... May 2024	10
ALC / USDA Memorandum of Understanding	14
Welcome New Members	17
Effort to Block “Top-Down” Forestry Plan	22
FORISK - Fiber Prices Mixed Year-Over-Year	26
Supreme Court Overturns Chevron Doctrine	28
USFS Releases 20-Year Wildfire Crisis Strategy	29
Bi-Partisan Legislation to Support Loggers Harmed by Natural Disasters	30



(Continued from page 1)

morning at the Carriage House Inn in Aiken. After introductions and tour information, the charter bus was loaded and headed to Gail Corley's Tree Farm outside Aiken. There Ben Royer, Milliken Advisors, led a walking tour and explained the forest management for timber production, reforestation, wildlife habitat, recreation and scenery. Ben explained how prescribed fire was used to control unwanted understory and reduce the risk of a wildfire. Ben explained the various age class stands and how they were being managed.

SCTPA provided each teacher a personalized folder with a SCTPA appreciation certificate, SCTPA and American Loggers Council stickers, a SCTPA pen and cap and articles and information on professional timber harvesting.

The next stop was the Clemson Edisto Research Center in Blackville where Ben Royer, Milliken Advisors and Charly Greenthaler, Clemson Extension talked about forestry management practices, timber cruising, forestry consultants and other aspects of the profession. Thanks to Ben and Milliken Advisors for sponsoring the lunch.

Then we went to see Irving Fail's logging jobsite just outside Blackville. Canfor forester Christopher Wilson led the tour as Irving was logging a tract and hauling the timber to Canfor's sawmill in Estill. Irving's son Wayne had the equipment stop and explained each unit. Irving got on the feller buncher and felled and bunched trees. The grapple skidder and the knuckleboom loader with pull through delimber were viewed in action with a truck being loaded for timber delivery to the sawmill. The teachers were told about how the logging was done and how the timber is separated on the deck into various products. The teachers were thrilled to see the live logging operation.

Last stop was Weyerhaeuser's Quail Ridge Nursery outside Aiken to see and learn how pine seedlings are grown and learn Weyerhaeuser grows improved pine seedlings using science and genetics. Quail Ridge produces 64 million seedlings annually. Bruce Francis and his team led the tour of the seedling field and ex-



plained the machinery is used on the nursery. The Weyco team explained how they work to improve pine seedlings to grow faster, healthier, straighter and more disease resistant for forest landowners to have the best tree and products. The group gathered in the seedling cooler for supper and thanks to Weyerhaeuser for the session and sponsoring supper.

The group traveled back to Aiken for the "debriefing" as I call it, to sit outside at the Carriage House Inn and relax. Plus, have some beverages at day's end sponsored by SCTPA. The evening sessions were to gather and fellowship and allow the teachers to ask questions about what they saw during the day and provide more insight and knowledge for them and to hear some of my experiences over my 47-year career.

Tuesday morning the tour headed to Snelling to tour the Swiss Krono laminated flooring manufacturing plant. Swiss Krono is a German owned company utilizing pine pulpwood to manufacture decorative laminate flooring. Bo Carson, fiber supply manager, led the teachers on a woodyard tour explaining the processes to receive pulpwood and make clean chips used to make the flooring panels. Bo and the plant team took the teachers through the facility to explain their manufacturing processes. Thanks to Swiss Krono for sponsoring the lunch.

The second tour stop was at Dempsey Wood Products in Rowesville. Dempsey is a family-owned sawmill producing lumber products and wood chips. Ronny Dempsey explained the sawmill processes and his team led groups through the sawmill facilities and provided explanations about the lumber manufacturing process. Thanks to Dempsey Wood Products for sponsoring the steak supper and sawmill tour.

Back on the bus the tour headed back to Aiken for the evening's question and answer session. Plus, evening relaxation and unwinding.

Another early start on Wednesday morning as the tour headed to Hitchcock Woods in downtown Aiken. This 2,100-acre tract is open to the public for hiking and horse-riding traffic with 70 miles of trails. The site is used for educational purposes and recreation. Managed by the Hitchcock Woods Foundation, the site is very diverse with longleaf pine trees and many plant species. Bennett Tucker and his team did a great job of explaining the preserve. The teachers conducted several Project Learning Tree activities headed by Matt Schnabel of the SC Forestry Commission. Thanks to Sabine & Waters for sponsoring the lunch at Hitchcock

(Continued on page 3)

(Continued from page 2)

Woods. If you have the opportunity, go visit Hitchcock Woods in Aiken.

After Hitchcock Woods the tour headed back to Carriage House Inn for the evening to allow the teachers to dine on their own in downtown Aiken. SCTPA treated several teachers to supper at Whiskey Alley restaurant.

Thursday morning the tour headed to Eastover to the Sylvamo paper mill, previously International Paper's mill. There Chase Bettis, wood procurement forester of International Paper (IP) as IP procures the wood supply for the mill, showed the teachers the old Spring House Plantation and toured the pine and hardwood plantations on the property. Then the teachers toured the paper mill. It was eye opening for the teachers to see the paper making process. They were amazed at the technology associated with paper making. Thanks to International Paper for the lunch sponsorship.

Then it was back to Aiken to clean up and head to Edgefield for the Sponsors Dinner at Log Creek Timber Company's Ole Timber Lodge. Tour sponsors and those that spoke during the week attended and got to hear teachers speak about their week's experience and thank the sponsors and others for their tour support.

Again, I was able to be the master of ceremony and introduced the Log Creek Timber Company team. Reg and Martha Sanders talked about the company's history and operations, introduced their team and thanked the teachers for what they do and for being on the tour. Thanks to Log Creek Timber for sponsoring the supper of fabulous grilled pork chops and all the fixings.

Friday morning everyone checked out of the motel and headed to the University of Georgia Savannah River Ecology Lab near New Ellenton. Sean Poppy and his assistant explained the ecology lab's work and guided the teachers on a walking tour of the grounds. Then the group headed into the meeting room where Emily Weeks did an activity entitled "If You Were the Boss."

Emily "O" led the week's review and pop quiz. The teachers received a door prize for correctly answering questions. A fun pop quiz to summarize what had been seen and learned during the week and in their pre-tour ac-

tivities.

Emily and I came up with four teacher recognition certificates. Jennifer Stepp and Mary Pepin received the Endurance Masters for hanging in there. Shelley Parsons received the Debriefing V.I.P. for hanging out in the evenings. Jennifer Jerina received the Question Master for the most asked questions and Beth Green received the Most Inspirational for her enthusiasm.

I was glad to make the closing remarks to express to them how much I appreciated them and how much the

tour means to me personally and to our entire industry. As I related, this was my 27th tour and it is always a highlight of my year.

I talked about "we're not cutting all the trees" as many people's perception is their reality and is skewed by not knowing or receiving misleading information. That perception is based on the simple

lack of knowledge and the belief of what they hear and think they see and not the real facts about sustainable forestry. Personal experiences were related where I had encounters with people that didn't know about the wood supply chain, sustainable forestry and the forest products industry and how I took the opportunity to explain our industry.

As I told them on Monday, they would witness and feel the passion our industry's professionals have in our industry segments and asked did they witness and feel that passion. And the resounding reply was "YES."

The teachers were told, now you are now stakeholders in sustainable forestry. You now have the knowledge, facts, science and I challenged them to go forth and preach the gospel and be advocates for sustainable forestry and our entire industry. As I related, never miss an opportunity to educate someone about our industry.

The teachers began the tour with basic knowledge from their pre-tour work, but now have a deeper appreciation and more knowledge about our industry, careers, people and the jobs they perform as professionals in a sustainable industry and as stewards of our forest resources and environment.

As usual the one line I heard often during the week was "I had no idea." Now they do have a greater idea and can be advocates as stakeholders in sustainable forestry, timber harvesting and forest products industries.

This group was a fun bunch. As I told them, I rate the

(Continued on page 4)



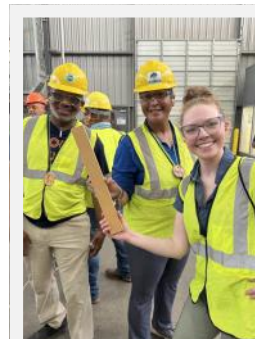
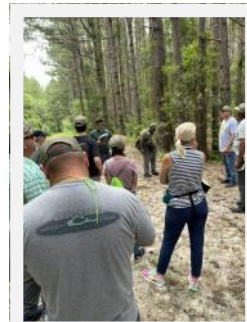
(Continued from page 3)

tour. On the scale of 1 to 5, the teachers rated 4.95. I personally thanked them for their engagement each day and getting to know each one and having the opportunity to provide my knowledge and experience, and plenty of fun stories of my 47-year career. I told them for all the evening hanger outers with me, they were official participants in the Teachers Experience Evening Evaluation Committee. It is a great pleasure to see the teachers begin and end the tour and how they absorbed the information about the tour stops

and presenters. I told them... you are one of the best teacher groups I've had the opportunity to be with.

SCTPA is a proud SC Sustainable Forestry Teachers Experience sponsor and participant. Thanks to all the tour site cooperators, the wonderful sponsors and the host of forest products companies for making the teachers experience so meaningful.

Again... a great week of experiences they will remember forever. Teachers Are Students for Sustainable Forestry showed what our industry is all about. Now the Teacher Students are Teachers of Sustainable Forestry. **Y'all teachers were awesome!**



BIPARTISAN COALITION INTRODUCES FIX OUR FORESTS ACT



The American Loggers Council fully supports the Fix Our Forests Act and is grateful for the bipartisan backing from the sponsors.

WASHINGTON, D.C., June 18, 2024 - House Committee on Natural Resources Chairman Bruce Westerman (R-Ark.) and U.S. Rep. Scott Peters (D-Calif.) introduced the Fix Our Forests Act, a comprehensive, bipartisan bill that will restore forest health, increase resiliency to catastrophic wildfires and protect communities.

"America's forests are in jeopardy. Insufficient management driven by bureaucratic red tape and frivolous litigation have turned vast swaths of our federal forests into overgrown and unhealthy tinderboxes. The Fix Our Forests Act will revolutionize the way we manage our forests and support active and responsible management of federal lands with the best available technology and science, leaving them more resilient for generations to come." - House Committee on Natural Resources Chairman Bruce Westerman (R-Ark.)

"Wildfires are more intense, frequent, and widespread today because of climate change and over a century of poor land management. In California the eight largest wildfires on record have occurred during the last decade, and in just one year, California wildfires contributed more to climate change than the state's entire power sector. Our bipartisan Fix Our Forests Act is a comprehensive approach to restore our forests and defend our communities from catastrophic wildfires. Our legislation meets the enormity of this challenge, gives forest managers the tools they need to conduct their work, and promotes scientifically backed land management methods that have been practiced by Native communities for centuries. Finally, we ensure that strong environmental protections are kept in place, while expediting the schedule of work and reducing the threat of frivolous litigation." - U.S. Rep. Scott Peters (D-Calif.)

Background

The Fix Our Forests Act is a historic and comprehensive package that will encourage active forest management and support community resiliency to wildfires by expediting environmental analyses, reducing frivolous lawsuits and increasing the pace and scale of forest restoration projects.

The bill will:

- Simplify and expedite environmental reviews for forest management projects
- Promote federal, state, tribal and local collaboration
- Deter frivolous litigation that delays essential projects
- Create a framework for prioritizing treatments in the forests at highest risk of wildfire
- Encourage the adoption of state-of-the-art science and techniques for federal land managers
- Encourage active management to improve the safety of powerlines and other infrastructure
- Strengthen tools like Good Neighbor Authority and Stewardship Contracting



"You Can Lead a Horse to Water, But You Can't Make it Drink"

I have been blessed to have a 43-year career in the forest products industry as a logger and a timber dealer. Fifteen years ago, I moved my business and part of my family from southern New England to South Carolina. I have had the pleasure of meeting and getting to know a vast number of people who are a part of this industry, and most will tell you I am very passionate about what we do. It deeply bothers me to see some of the issues that we are having to face these days that have hurt and/or closed many businesses in recent years, and I fear for many of us still hanging in there.

While some obstacles cannot be controlled, I am confident in one that I believe we can all work on. Forest products transportation has become a very costly part of our industry with fuel, insurance costs and labor increasing at a steady pace and only a handful of insurance carriers that will cover log trucks.

This is due in part to the fact that people have been encouraged to be 'sue happy' by constant commercials and billboards in their view every day. The cost to insure even one truck has become unreasonable and not affordable for most, and we don't have the option to pass on the additional expense. Most mills and timber dealers won't raise the loggers' rates so where can we go to get help?

Although I cannot speak for the mills or deal-

ers, I do believe we have a compensation deficiency, but that is a sensitive topic for another day! Now more than ever, truck safety should be a priority for every log truck owner and driver. With less claims and lawsuits, logically, we should be able to bring our insurance costs down.

My company is currently insured by a very exclusive captive insurance who offers regular training and monitors driver behavior (speeding, hard brakes, dangerous habits) weekly. Since joining them I have seen how training has helped stabilize my rates as well as those of the other members. Our drivers have become more aware of situations around them and the dangers even one small mistake can cause. When we do the same thing every day, we become lax so training reminds us of a lot of the little things we can do to prevent accidents and costly lawsuits, especially in the states considered the "wood basket" of the timber industry, where litigation is generally not in our favor.

If I told you there was a way to stabilize insurance rates, wouldn't you be all in? In 2015 a group of very forward-thinking industry professionals got together and formed TEAM Safe Trucking. The acronym TEAM (Together Everyone Accomplishes More) was formed years ago when the group of insurance and business leaders were addressing problems with machinery burning. They also started looking at commercial auto liability and observed that we had a problem on the horizon that needed to be addressed.

(Continued on page 7)

(Continued from page 6)

In 2021 I became president of this non-profit group of dedicated and concerned volunteers who have worked very hard to put together a safety training program designed specifically for the forest products transportation industry. We offer hundreds of training modules that were designed specifically for forest products haulers and are easy to access and use.

Is there a cost associated with the program? The answer is yes, but I can promise you it is miniscule in comparison to the cost of a lawsuit, and it is an investment in your business and your employees.

As we approach the half-way point of 2024 with only a small number of insurance carriers writing commercial truck liability insurance, one can't help but wonder how many more forest products transportation and logging companies will go by the wayside because it is unprofitable? How high will insurance rates get if we stay on the path we are on?

A good friend and director of the American Loggers Council, Scott Dane, said something at a meeting not that long ago that really hits home - "As loggers our independence is one of our greatest assets, but also works to be our worst demise."

TEAM Safe Trucking offers an opportunity for us to all work together and train our drivers to be safer. We need to all be on the same team to fight the insurance rate battle. Ask your insurance agent what they do for loss control and how can they help you if you utilize what they offer? Ask if they support TEAM Safe Trucking and how they can help you to utilize it to start to stabilize your rates. If they don't support it now, ask them to look into it.

TEAM Safe is here to help in any way we can with training, but we need you and your agents

to start using the programs we provide. We encourage all truck owners and drivers to contact us and see what we have to offer. I personally would also ask anyone who would like to be a part of this great group to please contact us. We can always use more volunteers, especially forest products transportation and logging individuals! We need your knowledge to help us grow.

TEAM Safe Trucking is the reservoir full of water. Consider this your invitation to "drink" in the benefits of our program!

Bob Lussier
President, TEAM Safe Trucking
Owner, Great Woods Companies LLC

<https://teamsafetrucking.com/>
(252) 820-3423
admin@teamsafetrucking.com





MOSELEY
MARCINAK
LAW GROUP

Robert D. Moseley, Jr.
Direct Dial: 864.248.6026
Email: Rob.Moseley@momarlaw.com

June 16, 2024

Log Haulers in South Carolina

A review of South Carolina's laws on hauling timber would be useful for timber producers. To start with, log trucks are governed by the same equipment laws as normal commercial vehicles. There are also some additional rules for hauling logs.

Links of Logs

Long wood has a state limit of 80 feet for the log itself. SC Code Ann. 56-5-40 90 (E). The logs cannot obscure the taillights and cannot drag the ground. If the logs overhang more than 4 feet, the logs must have a flag. At night there must be strobe light. Any other loads for the length of loads does not apply to log trailers. SC Code Ann. 56-5-4090

Double stacked wood (short wood) is governed by section 393.116 of the federal regulations and requires two ties per stack. Short wood can only overhang 6 feet.

Weight

The state and federal weight limit is 80,000 pounds. For loads moving from the forest to the mill, there is a 15% tolerance, which would allow a legal load of 84,272 pounds on 5 axles. Unlike regular CMVs, there is a weight limit of 23,000 per axle. There are no tolerances for transportation on the interstates.

The South Carolina DOT allows free overweight permits of up to 90,000 pounds.

Pole trailer is defined under section 40 CFR 390.05T.

Miscellaneous Rules

A flag must be 18 inches by 18 inches according to 49 CFR § 393.87. The flag should be on the log that hangs over the most. The strobe definition is 49 CFR § 393.11.

P.O. Box 26148, Greenville South Carolina 29616

2024 AMERICAN LOGGERS DC FLY-IN

42 STATES - 1 UNIFIED VOICE

ALC members met with lawmakers in DC to discuss expanding opportunities for loggers through the Renewable Fuel Standard, supporting domestic industrial local wood pellet market development, enacting the Future Logging Careers Act, abolishing the Federal Excise Tax, and permitting higher truck weights on interstate highways.

The 2024 DC Fly-In was co-hosted by the American Biomass Energy Association and included their members. The co-hosted Congressional Reception was attended by members, government representatives, elected officials, and guests. The 2024 Congressional Leadership Awards were presented to Senator Daines (MT), Senator Shaheen (NH), Congressman McClintock (CA), and Congressman Garamendi (CA). Congressman Tiffany (WI), Chairman of the Natural Resources Subcommittee on Federal Lands, along with USFS Associate Deputy Chief Troy Heithecker, also attended and addressed the group.

The Louisiana logging delegation arranged meetings with House Majority Leader, Steve Scalise (LA) and Speaker of the House, Mike Johnson (LA). The Speaker of the House was presented with a gavel made from Cypress, the Louisiana state tree (provided by Greg Williams Logging) and represented of a “Renewing of the Land” from Isaiah 55:13.



Associated California Loggers Representatives



**Willard Office Building
1455 Pennsylvania Ave.
NW Suite 400
Washington, DC 20004
www.amloggers.com**

Written for the National Hardwood Lumber Association, Allied Angle column, by Scott Dane

The title of this column, “Allied Angle”, is the very essence of this submission. Allied (def) – (adj) joined by or relating to members of an alliance; (v) combine or unite a resource or a commodity with another for mutual benefit; side with or support. Organizations must develop “allies” to effectively represent the membership and all sectors of the industry.

But we don’t. There is an endless list of national alphabet soup organizations (ALC, FRA, AF&PA, NAFO, SAF, NHLA, AWC, SFI, FLA, FFRC), not to mention state organizations, representing every sector of the timber and forest products industry. By that alone, it should be obvious that although there may be loose affiliations, most are still working independently of the others. We are not “allied”, at best we are loosely affiliated.

***“There is power in unity and there is power in numbers.”
Rev. Martin Luther King***

Within the logging sector, Independence is one of the most admirable characteristics and strengths. It is also the greatest weakness.

But the common opposition to our industry is extremely well organized, funded, focused, collaborative, and structured. While we are fragmented, underfunded, disjointed, and internally competitive.

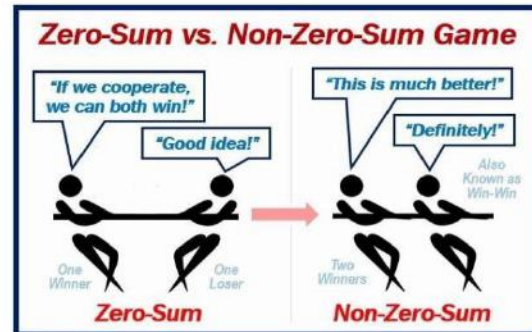
If we pooled our resources, found common ground, supported one another, had a unified message, and collectively invested in advancing our mutual agenda, then we would be a formidable force equal to, or more influential, than those that oppose what we represent.



**Willard Office Building
1455 Pennsylvania Ave.
NW Suite 400
Washington, DC 20004
www.amloggers.com**

Why don't we? It is simply a matter of ego, territorialism, and the concept of zero-sum game, meaning that if one organization does well, accomplishes something, gets credit, then another loses in some way. But that is a false narrative. When one does well, we all benefit.

The opposition loves the infighting between the timber and forest products industry organizations. The lack of cooperation and collaboration ensures little is accomplished, and much is lost.



I can speak to that; I've been a part of it, I am guilty. But the challenges and threats are too severe to allow that to be the model. It has only resulted in failure and a real disservice to the members of the timber and forest products industry organizations, who have invested their lives, money, and time in forest management and forest products.

All timber and forest products industry organizations and associations need to truly become "Allied" and work together if we are going to succeed. It's time to recognize that the enemy is not us, it is not each of us against one another, and instead time to find common ground, pool our resources, coordinate our message, and convey a unified front. Only then will the timber and forest products industry organizations and associations be effective.

Better yet, timber and forest products industries need to partner with other natural resources sectors like farming, recreation, mining, ranching, fishing, etc. and form a Natural Resources Coalition. We all have common interests that are being threatened by common sources. Collectively we will be a formidable presence that will have the resources to influence to make a difference, divided we are failing.



FORESTRY RISK
SOLUTIONS



psiagency.com

BEST COVERAGE IN THE *WOODS*

Workers' Comp • Commercial Auto • General Liability
Equipment & Property • Timberland Liability • Group Captives
and more

LOCAL AGENTS NEAR YOU

Serving Loggers, Sawmills, Trucking, Foresters, and Landowners



A Division of
PALMETTO STATE
INSURANCE

LET'S TALK
866.380.3481

1720 North Lake Drive
Lexington, SC 29072





If it Aint Broke, Why Fix It?

That seems to be a common sentiment amongst a number of logging business owners when it comes to considering how they can improve the way they handle a fundamental part of their logging operation: tracking, receiving revenue for, and paying for the loads they produce.

The problem is: often they don't even know their methods are broken until they try another method.

And then they see the **time they were wasting** with their old methods, and **the money they were leaving on the table** from loads that were paid incorrectly, and the **ticket errors** that their old methods never allowed them to catch. I can say these bold comments because our clients have repeatedly made these observations to me over the years— all because they were willing to embrace a new way of doing things.

Sometimes the most positive outcomes in our lives - and our businesses - come from “making improvements” rather than just “making do.” And those improvements allow us to get ahead instead of just get by.

The last time you bought a new machine for the woods, chances are, your old one was probably still working. Yet you embraced the change because you believed a new machine would help you be more productive.

In the same way, doesn't it make sense to consider making a positive change to enhance productivity in the office?

Not only will it enhance productivity, it can even help you make more informed decisions about where your business is most in need of positive change.

Call Caribou today to learn how our software solutions can help you enhance your productivity and your professionalism in the office, and help you get a better handle on the economics of your business so you can stay in business.

Whether you run a 2-person operation or a 20+ one, our **StumpGeek system** and our **Logger's Edge system** have you covered. We invite you to join over 300 logging contractors across the US and Canada who rely on our solutions every day to do their businesses better. Contact Teresa Hannah at 850-532-6206 x1 to schedule a consultation to determine which solution is best for your business.



Willard Office Building
1455 Pennsylvania Av. NW
Suite 400
Washington, DC 20004
202-627-6961
Scott.dane@amloggers.com
www.amloggers.com

PRESS RELEASE

May 20, 2024

For Immediate Release

TO: ALL MEDIA
FROM: AMERICAN LOGGERS COUNCIL
RE: AMERICAN LOGGERS COUNCIL SIGNS MEMORANDUM OF UNDERSTANDING WITH
THE U.S. FOREST SERVICE

AMERICAN LOGGERS COUNCIL SIGNS HISTORIC MEMORANDUM OF UNDERSTANDING WITH THE USDA FOREST SERVICE

The American Loggers Council, the largest national timber industry association in the U.S., has entered into an historic Memorandum of Understanding (MOU) with USDA Forest Service. This MOU formalizes future collaboration and recognizes common areas of mutual benefit.

The MOU highlights the vital role and services that the timber industry has in supporting the Forest Service objectives of managing the national forests; along with the role that the Forest Service has in supporting America's timber industry and the resource they provide for the essential wood products society depends upon daily.

"Loggers are on the front line every day, contributing directly to the health of the nation's forests," said Forest Service Chief Randy Moore. "Sustainably sourcing wood supports critical forest management activities that reduce the risk of catastrophic wildfires and make our forests healthier, while also creating jobs and strengthening local economies. This memorandum builds on our partnership with loggers to improve the health of the nation's forests."

There are many challenges threatening the future and health of the timber and forest products industries and the nation's forests. The solution to addressing these challenges and threats is collaboration and cooperation between the timber industry, the forest products industry, and public forest managers. Each entity shares a common objective – healthy forests. The timber and forest products sector provide the tools and markets to enable; sustain-

(Continued on page 15)

(Continued from page 14)

able forest management practices; mitigate wildfire impacts; improve forest health; reduce disease and infestation; improve carbon sequestration; create rural employment; and support communities.

However, these goals and objectives require a concerted effort between the public and private sectors. All are dependent upon the other, and none can succeed without the other. This MOU formally recognizes a commitment to working together to sustain the critical infrastructure and the forests.

The American Loggers Council and the Forest Service have a history of collaboration and co-operation in areas of mutual interest and benefit. Examples include:

- the \$200 million Pandemic Assistance for Timber Harvesters and Haulers (PATHH) program;
- the \$10 million Biomass Transportation Incentive Project (BTIP);
- and the \$200,000 timber industry Public Image and Workforce Development Campaign.

“America’s loggers are the “boots on the ground” providing essential wood products while helping to protect and restore our forests to their fullest potential. We cannot do our job without a strong working relationship with the United States Forest Service. This memorandum will serve to strengthen that relationship as we focus on our common goals of healthy forests coupled with a healthy timber industry.” Mike Albrecht, President, American Loggers Council



Shealy's Truck Center

"Quality Without Compromise"



Here you won't find any highway trucks being passed off as work trucks. We started building log trucks nearly 50 years ago, which means that we understand the demands that logging has. Big loads, Tough conditions. Not just any truck can take 200,000 pounds down a muddy road and keep you safe!

You need trucks that were made specifically for your job! Trucks that work just as hard as you do every single day! You need trucks that have powerful engines and strong transmissions, with a heritage of durability and reliability, backed by unmatched factory and dealer support. We have a whole family of trucks that can be built to take on any task!

Shealy's Truck Center, Inc. is your Mack/Volvo, Isuzu, and TICO dealer located in Columbia!

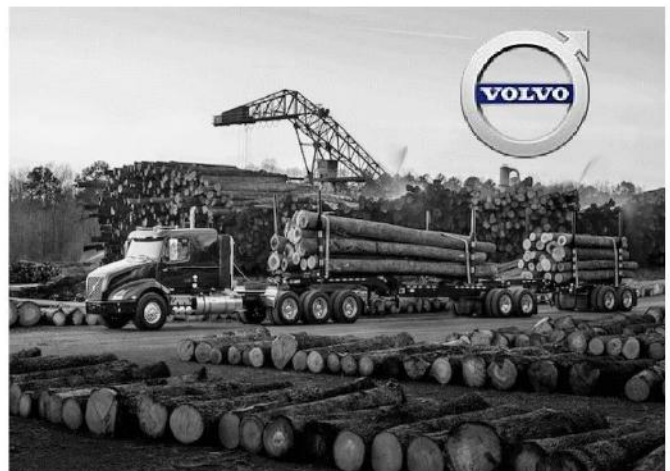


Contact Us Today!

David Shealy: Office: 803-771-0176 Cell: 803-467-7605

Jonathan Myers: Office: 803-744-3711 Cell: 864-436-0198

John Walsh: (for any Upstate or Western Carolina needs) Cell: 864-347-0563



WELCOME NEW MEMBERS

SCTPA welcomes our 2024 1st Quarter New Members & Restart Members.
Your support is appreciated.

Timber Products, Inc., Ruffin
Gibson & Associates, Inc., Irmo
Bandit Industries, Inc., Remus, MI

*Dedicated representation & service to the professional timber harvesting segment of
South Carolina's forest products industry.*





Interstate South Carolina
TIRE SERVICE 888-641-6058



K516 Model,
11R22.5 30/32nds - \$280 Ea*

K516 Model,
11R24.5 30/32nds - \$310 Ea*

All Tires Are →
Smart Way Approved

ah13rn



ag57dh



K216 Model
295/75R22.5 • 19/32nds

← **All Tires Are**
Smart Way Approved
\$275 Each*

***While Supplies Last**

SAMSARA ONBOARD CAMERAS

Member Program 2024

SCTPA partners with Samsara for an Onboard Camera member program offering a 15% discount for active, dues paid members and in certain situations a 20% referral bonus.

The average Logging Truck can save over \$2,000 a year with a smart WIFI Dash Camera by:

- Avoiding False Claims
- Decreasing Insurance Costs
- Reducing the chance of accidents by way of In-Cab Alerts

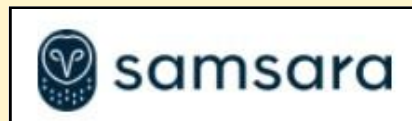
Dash cameras have proven their worth and value in many accidents to where the truck driver was not at fault in an accident. Dash cameras help to avoid the “he said, she said” situations in accidents. And of course, the dash camera can show a driver being at fault in an accident as well. Even if the driver was at fault, having the dash camera could potentially assist in the accident investigation and the outcome.

Our litigious society now with all the screaming predatory plaintiffs’ attorneys are out to get the most out of an accident for lawsuits. So why not try to protect your business and your drivers by installing dash cameras to improve driver and trucking safety, training and perhaps a little more peace of mind.

Samsara provides Real-Time GPS Tracking, Automatic Text Alerts with Footage, Live Streaming Footage and Advanced Intelligence In-Cab Audio Alerts.

Christian Houston-Floyd is the Samsara Account Executive. His direct contact is 470-502-6900 extension 3 or online at christian.houston@samsara.com.

SCTPA is proud to provide this Samsara program as a member benefit and service. It is highly recommended trucks be equipped with GPS and Onboard Cameras regardless of system brand.



Timber Talk

Your Voice for South Carolina Timber Harvesting

Contact Crad Jaynes at
1-800-371-2240 or bcjpaw@windstream.net

Find one of our **Chip**,
Log, or **Lowboy** Trailers
at a location near you!

SPARTANBURG, SC

CHARLESTON, SC



GET THE RIGHT TRAILER TO HAUL MORE LOADS.

**Call Today,
Pick Up Tomorrow
(910) 629-2824**

PINNACLE
TRAILER SALES

**Get the right trailer,
for the right haul, right now.**

- ✓ Increase your payload. ✓ Take on larger tracts.
- ✓ Respond quickly to more loads.



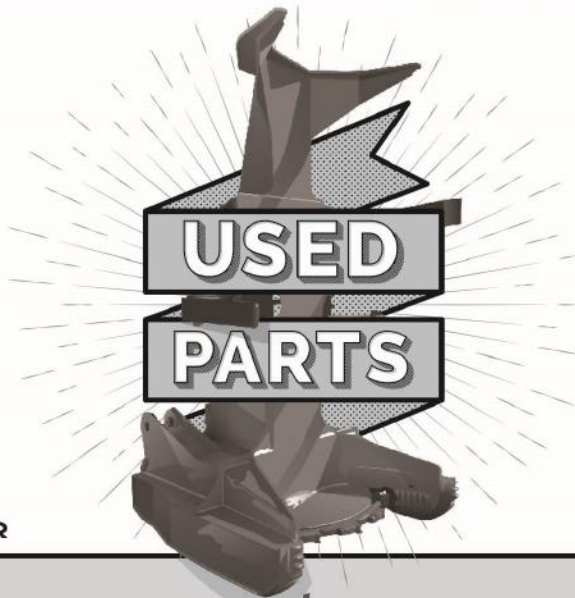
Financing and leasing available through our in-house program, **Peak Leasing.**



**WE WERE LOGGERS FIRST.
SO WE PUT LOGGERS FIRST.**

We are a **PROUD SUPPORTER** and **ALLIED SUPPLIER** of the SCTPA. Trusted for over 45 Years, We started with one mission. A commitment to keep logger's operations running strong by providing quality used logging equipment and parts at **FAIR PRICES**. Nothing has changed since **DAY ONE**.

STAY UP TO DATE ON INVENTORY & SPECIALS
[FACEBOOK.COM/WWTRACTOR](https://www.facebook.com/WWTRACTOR)



LATE MODEL DISMANTLED FORESTRY MACHINES

CATERPILLAR

525Ds 535Ds // 525Cs 535Cs 545Cs
563Cs 573Cs // 559Bs 559Cs

JOHN DEERE

648Ls 748Ls // 437Cs 437Ds
643L 843Ls // 643Ks 843Ks

TIGERCAT

620Es 630Es // 720Es 720Gs
718Es 724Es // 845D

**USED PARTS FOR MOST
BRANDS AND MODELS!**

**OVER
13
ACRES**

THE SOUTH'S
LARGEST *Used Parts* **INVENTORY**

VIEW MORE EQUIPMENT
AT OUR NEW WEBSITE
WWTRACTOR.COM
INFO@WWTRACTOR.COM



VISIT OUR YARD

1418 OLD HWY 52 SOUTH
MONCK'S CORNER, SC 29461

843 761 8220

**OVER
45
YEARS**



Expertise in Forestry Workers' Compensation!

*Forestry Mutual has been **SETTING THE STANDARD** in providing **Workers' Compensation Insurance** for over 50 years.*

You can count on these critical attributes when you let us care for your business and employees:

We cover medical bills, lost wages, and return-to work assistance. We have proven injury management programs and a loss control team of experts that give hands-on training and safety advice to control your costs and provide the best possible outcome.

The wood products industry has counted on Forestry Mutual to protect their businesses and employees so they can get back to work.

Switch to Forestry Mutual for top-tier Workers' Compensation. CONTACT YOUR AGENT NOW!



✓ **Trust. Integrity. Honesty.**

To learn more about Forestry Mutual and how you can become a broker agent. Scan the QR-Code Now!



Proudly Endorsed by Regional Associations!



www.forestrymutual.com

Call Toll Free @ (800) 849-7788



Team Safe Trucking Driver Safety Training Programs

South Carolina Timber Producers Association is providing your company with **Team Safe Trucking Driver Refresher Training Program**. TST training courses are the most convenient and user-friendly truck driver safety training courses available. They focus specifically on transportation of forest products. Trainees can access TST training courses at any time using a smart device or computer with internet access. A detailed record of completed courses, the training material used for training, the date and time the training was completed, and a training certificate is available for each course completed through the online training management platform. This information can be made available to business owners, insurance companies and logger associations. The convenience of “on-demand” driver safety training will save time and money, allowing more time for productivity while complying with governmental and insurance carrier mandates. These courses can be accessed free of charge. This unique training platform is designed with input from forest products truck drivers, owners, and other experts across the nation.



Team Safe Trucking Driver Safety Training Modules Outline (additional modules available covering various subjects)

The South Carolina Timber Producers Association Educational Sponsor Website

southcarolinatimberassociation-teamsafe.talentlms.com - (31 courses) Driver Refresher Training Program Courses
Group Key: SCTP Association

Create a free account for yourself and all your drivers and start your fleet safety training program today!

The Team Safe Trucking trainings include the following:

Introduction to Team Safe Trucking, Clearances, Driver Condition, Distracted Driving, Driver Qualification, Preventing Rollovers, Vehicle Condition, Speeding

Driver Refresher Training Courses:

Passing and Being Passed, Coupling and Uncoupling, DOT Inspections, Right of Way, Backing, Following Distance, Railroad Crossings, Fatigue, Turns and Curves, Driver Training, Fleet Safety Programs, Breakdowns, Alcohol and Drugs Part 1, Driver Selection, Mill Safety Challenges, Multi-contractors, Entering and Exiting, Mill General Safety, COVID19 & Wood Roads, Alcohol & Drugs Part 2, Maintenance & Vehicle Condition, Accountability, Loading and Unloading, Fall Prevention, Basic Operation, Hours of Service Requirements, Driver Orientation, Fatigue and Wellness Awareness, Control System and Dashboard, Post-Crash Procedures, Pre- and Post-Trip Inspections, External Communications, Basic Control, Whistleblower/Coercion, Shifting and Operating Transmissions, Trip Planning, Backing and Docking, Drugs/Alcohol, Coupling and Uncoupling, Medical Requirements, Safe Operating Procedures, Visual Search, Communication, Distracted Driving, Speed Management, Space Management, Night Operation, Extreme Driving Conditions, Advanced Operating Practices, Hazard Perception, Skid Control/Recovery, Jackknifing, and Other Emergencies, Railway-Highway Grade Crossings, Vehicle Systems and Reporting Malfunctions, Identification and Diagnosis of Malfunctions Part 1, Identification and Diagnosis of Malfunctions Part 2, Identification and Diagnosis of Malfunctions Part 3, Roadside Inspections, Maintenance, Non-Driving Activities, Introduction to Non-Driving Activities Part 1, Introduction to Non-Driving Activities Part 2, Handling and Documenting Cargo, Environmental Compliance Issues

S C Timber Producers Association
Crad Jaynes, SCTPA President & CEO
P.O. Box 811, Lexington, SC 29071
601 Carola Ln, Lexington, SC 29072
Phone: (803) 957-9919
<https://scloggers.com/>
bcjpaw@windstream.net



CONGRESSMAN LAMALFA LEADS EFFORT TO BLOCK BIDEN ADMIN “TOP-DOWN” FORESTRY PLAN

(Washington, D.C., June 28, 2024) – Congressmen Doug LaMalfa (R-Calif.), Chairman of the Agriculture Subcommittee on Forestry, Dan Newhouse (R-Wash.), Chairman of the Congressional Western Caucus, and Tom Tiffany (R-Wisc.), Chairman of the Natural Resources Subcommittee on Federal Lands, introduced a bill to block the Biden Administration’s misguided proposed plan to hinder forest management activities that protect old and mature growth.

The USDA’s National Forest Plan Amendment the Biden Administration proposed would implement a unilateral approach to managing old growth forests to go over regional management without carefully considering unique local factors.

“Forest management activities should be spearheaded at the regional level, not decided from some top-down plan that was crafted by a DC bureaucrat that has never set foot in the forest in question. Regional voices should be prioritized, not ignored, and DC bureaucrats have proven time and time again that they are not willing to authorize the work needed to manage our forests and reduce wildfire risk, such as thinning projects and timber harvesting. We must block the Biden Administration’s irresponsible new plan that will tie the hands of those on the ground who are actively combatting this wildfire crisis,” said Congressman LaMalfa.

“The proposed Old-Growth Plan Amendment is out of touch with the needs of rural America. By limiting timber harvesting and proper forest management, the risk of catastrophic wildfires increases. I’m proud to join Western Caucus

Executive Vice Chair LaMalfa on this important legislation to overturn this attack on common sense forest management and to ensure forest managers have access to the tools needed to do their jobs,” said Western Caucus Chairman Newhouse.

“Local land managers are the best stewards of the land—not bureaucrats a thousand miles away in Washington, D.C. The Biden administration’s Old Growth Plan Amendment imposes a one-size-fits-all approach that sidelines local expertise and makes it harder to maintain forest health. This much-needed bill will block this misguided policy and ensure active wildfire mitigation,” said Congressman Tiffany.



Background:

In April 2022, the Biden Administration directed the U.S. Forest Service to define, identify, and assess the risks to “old-growth and mature” forests absent a Congressional mandate or existing authority to do so.

In December 2023, the U.S. Forest Service released a Notice of Intent to prepare an Environmental Impact Statement (EIS) that would amend all 128 forest plans in less than one year, in direct conflict with its own processes that require tailored approaches at the forest level.

On June 21, 2024, the draft EIS was published in the Federal Register, opening a 90-day public comment period.

A final EIS and record of decision for the amendment to all 128 National Forest system plans is expected at the end of 2024 beginning of 2025.

Congressman Doug LaMalfa is a lifelong farmer representing California’s First Congressional District, including Butte, Colusa, Glenn, Lassen, Modoc, Shasta, Siskiyou, Sutter, Tehama and Yuba Counties.



WE KNOW LOGGERS

Conway, SC
(843) 397- 9400

Polkton, NC
(704) 272-7685

Walterboro, SC
(843) 538-3122

Newberry, SC
(803) 276-8030

Elizabethtown, NC
(910) 247-6391



@TIDEWATEREQUIP

WWW.TIDEWATEREQUIP.COM

\$100 NEVER TOOK YOU SO FAR.

...BREAKING NEWS...

After months of hard work, we have launched our new website. Members will now have access to their SLC invoices 24/7 with a member login! Amongst the new features are the "find the nearest station" to my location feature, an approved national tires and parts dealers with location info, fill out an application on-line and other features that will assist in the improved communication with our members. The SLC's founding "Cost-Cutting Mission" continues!



AN INDEPENDENT FORESTRY & AGRICULTURAL COOPERATIVE

www.SouthernLoggers.com



29 FUELING STATIONS

Brewton, AL
Claiborne, AL
Cottonton, AL
LaFayette, AL
Moundville, AL
Pennington, AL
Pine Hill, AL
Selma, AL
Campti, LA
Carmel, LA
Chopin, LA
DeRidder, LA
Hodge, LA
Mansfield, LA
Pineville, LA
Port Hudson, LA
Winnfield, LA
Zwolle, LA
Monticello, MS
Redwood, MS
Chillicothe, OH
Allendale, SC
Georgetown, SC
Orangeburg, SC
Domino, TX
Evadale, TX
Lufkin, TX
Pineland, TX
Covington, VA



DOBBS

EQUIPMENT



Dobbs is on the job with you.

Take on projects from every angle. Win in the woods when you outfit your John Deere forestry equipment with Timbermanager and Timbermatics technology. Harvest the versatility offered with John Deere's loaders, skidders, harvesters, and feller bunchers. Dobbs is your industry leading source support and solutions for John Deere equipment, genuine parts, and service.

DOBBSEQUIPMENT.COM | (844) 4 MY DOBBS

YOUR SOUTHEAST FORESTRY EQUIPMENT SUPPLIER



Fiber Prices in Majority of Regions in North America Mixed Year-Over-Year

ATHENS, GEORGIA – June 20, 2024 –U.S. and Canadian weighted softwood fiber prices increased 2% and 6% year-over-year, respectively, through Q2 2024 according to the Forisk Wood Fiber Review (FWFR). Fiber price increases stem from markets adjusting to a “new normal” following the end of spring outage season at many North American pulp and paper mills, and hopeful end market outlooks for some facilities.

Canadian roundwood prices increased 10%, and chip prices fell 9% year-over-year. Softwood pulplog prices in British Columbia were up 19% for the quarter, and prices increased 9% in the Maritimes. Delivered softwood chip prices were down 5% in Alberta, up 11% for East Ontario/Quebec and 5% in British Columbia for the quarter. “The Canadian industry continues to be in a state of crisis, and without provincial government intervention or end market price corrections, it will continue” according to Vickie Swanton, Forisk’s Western Region Representative. “In addition to the challenging operating environment, some fear a bad fire season this summer due to moderate rains throughout the spring.”

U.S. roundwood prices rose 2% year-over-year and chip prices fell 8% year-over-year, with significant regional variability. In the Lake States and Northwest U.S., prices fell for almost all products year-over-year. The U.S. Southeast and South Central fiber prices increased or fell moderately year-over-year for roundwood and chips, with Southeast hardwood residual prices the largest mover, up 15% for the year. Northeast fiber prices increased by double digit percentages across all products year-over-year. “Softwood lumber markets did not experience the spring building bump producers had hoped, depressing some sawmilling activity. New softwood lumber production came online during the quarter and new investments were announced, creating new fiber supply streams in areas with already ample supply” noted Stephen Wright, Product Manager for the FWFR. “Fiber consuming firms continue to enjoy ample fiber supply and are cautiously optimistic for an improved back half of the year.”

(Continued on page 27)

(Continued from page 26)

Wood fiber costs account for over half of total pulp manufacturing cost worldwide. The Forisk Wood Fiber Review includes prices and market commentary for all major North American regions, providing essential data for anyone that needs to track pulpwood, wood chips, and biomass prices in the world's largest and most dynamic wood fiber markets. The FWFR provides updates of softwood and hardwood prices for all major markets in North America. Prices are reported for wood delivered to consuming plants as a range and average price. Each report also updates U.S. and Canada trade statistics for lumber, logs, wood pellets, wood chips and pulp.

For more information or to subscribe to the Forisk Wood Fiber Review, visit Forisk's website or contact Nick DiLuzio, ndiluzio@forisk.com, 770.725.8447.



About Forisk Consulting: Forisk delivers forecasts and analysis of forest industry markets and timberland investments. Firms participate in Forisk's research program by subscribing to the Forisk Research Quarterly (FRQ), the Forisk Wood Fiber Review, or the North American Forest Industry Capacity Database; supporting benchmarking studies related to forest operations and mill capacities; and attending educational workshops.

Forisk Consulting | PO Box 5070, Athens, GA 30604
Phone: (770) 725-8447



Battling High Costs to do Business

With adverse market conditions bearing down on our logging operations it is more important than ever to find ways to cut costs. The only way to make it now days is to save it and that is just what our systems provide your operation. A way to cut out the "middle man" on your hose & fitting supply and cut out the downtime busted hoses cost your job!

Guaranteed to cut your costs by **over 50%**



Mobile On-Site Crimping Units
Get rid of costly downtime by crimping your hoses & fittings right on the job site





In-Shop Crimping Units
Ditch the high priced parts stores and start crimping your hoses yourself at your shop



Schwab Brothers Advantage

- Guaranteed return on investment
- Better pricing on hose & fittings
- Distributor-direct purchasing
- No-cost startup options

Call now to learn more: 850-838-6487  www.schwabbrothershydraulics.com



Policy Alert: Supreme Court Overturns Chevron Doctrine

July 1, 2024
Forest Landowners Association

Late last week, the U.S. Supreme Court ruled to overturn the Chevron Doctrine, established in *Chevron U.S.A., Inc. v. Natural Resources Defense Council, Inc.* (1984). The landmark ruling in *Loper Bright v. Raimondo* and *Relentless v. Commerce* (2024), authored by Chief Justice Roberts, marks a significant shift in the regulatory landscape.

For forty years, the Chevron Doctrine has granted federal agencies the ability to interpret vague legislation, allowing agencies to claim regulatory authority. However, the overturning brings regulatory power back to the court system to resolve statutory ambiguities.

Chief Justice Roberts emphasized that courts must now exercise their independent judgment to determine whether an agency has acted within its statutory authority, as required by the Administrative Procedure Act (APA).

The implications of this ruling for private forest landowners are yet to be seen. While the roll-back of Chevron deference is expected to restore a more balanced separation of powers, ensuring that Congress remains the primary law and policymaker, it will not immediately impact existing regulations.

However, this decision opens the door for legal challenges to agency interpretations that exceed statutory authority. It also underscores the importance of clear legislative drafting and may lead to more rigorous judicial scrutiny of agency actions. The FLA team had the following statements:

Craig Anderson, FLA Director of Government Affairs:

"The Supreme Court's decision to overturn the Chevron Doctrine is a significant move towards restoring the Constitution's intended balance of power, ensuring that legislative responsibilities rest firmly with Congress rather than the Executive or Judicial branches. It is my hope that Congress will now focus on crafting smaller, more targeted policies, allowing for clearer understanding and more manageable legislation that can be effectively addressed by both policymakers and the American public, rather than imposing complex, thousand-page bills."

Katie Moss, FLA Director of Stewardship Initiatives and Regulatory Affairs:

"This ruling task federal agencies with the responsibility to justify their regulatory actions rather than receiving the deference to enact broad or overreaching rules in response to ambiguous language. Restoring the balance between the branches of government and requiring more intentional, objective rules from policymakers can help achieve fair species, water, and air regulations for landowners moving forward."

The Forest Landowners Association will continue to monitor the developments stemming from this ruling and will provide detailed guidance on its potential impacts.



The Intersection between the NWTF and the Timber Industry

Molly Pitts | Wildfire Crisis Manager | National Wild Turkey Federation

June 27, 2024

In January 2022, the U.S. Forest Service (USFS) released the 10-year Wildfire Crisis Strategy (the Strategy) to address the wildfire crisis where it poses the most immediate threats to communities. Based on years of scientific research and a historic level of funding, the Strategy is meant to drastically increase the pace and scale of forest treatments. To be successful, the Strategy outlines the need for the Forest Service to work with partners such as states, Tribes, and nongovernmental organizations.

Recognizing the need to increase capacity, the U.S. Forest Service signed a 20-year Master Stewardship Agreement (MSA) with the National Wild Turkey Federation (NWTF) in September of 2022. The primary purpose of the MSA is to work together to address the wildfire crisis in the West and promote healthy forests across the U.S. This MSA was the first of its kind in terms of being a long-term agreement with a conservation organization and is the largest in the NWTF's 50-year history.

The mission of the NWTF is the conservation of the wild turkey and the preservation of our hunting heritage. Through the delivery of this mission, the NWTF addresses our four shared values to go way beyond turkeys: clean water, healthy forests and wildlife habitat, resilient communities, and robust recreational opportunities. Given our mission and values, it is not surprising that the NWTF is the largest and longest-serving partner with the Forest Service, with over a 40-year history of implementing projects together. Through traditional stewardship agreements and other agreements, the NWTF has worked in every Region of the Forest Service except for Hawaii and Alaska.

The MSA provides the umbrella structure for the NWTF to work with the Forest Service and outlines how we will partner. This work may include road

and trail maintenance, vegetation management, noxious weed control, reforestation, project preparation including surveys, and supporting the innovative use of forest products. Based on the MSA, we are building out Regional Supplemental Project Agreements (SPAs) that are tied to specific projects on the ground. Each project varies. In some cases, we are asked to help with prep, such as botany surveys. Other times, we are asked to implement the project and sell the forest products.

In addition to the MSA, the NWTF recently signed a Participating Agreement with the Forest Service. This agreement will fund additional staff for the NWTF, which is tied specifically to the Wildfire Crisis work. Positions include the Wildfire Crisis Manager, Regional Coordinators, a budget specialist, and Geographic Information Systems (GIS) support.

For the NWTF to be successful in the wildfire crisis work we are being asked to take on, as well as our normal stewardship work, we know we need a sustainable timber industry to implement the work on the ground and utilize the wood being removed. Through our MSA, the NWTF is required to utilize the local bidders list from the USFS, and we typically extend outreach further through local trade/advocacy associations. Our goal for every project is open and competitive bidding based on a defined best-value approach.

If you are interested in doing work for the National Wild Turkey Federation, please contact the following:

Molly Pitts – Wildfire Crisis Landscapes; 928-521-9476

Doug Little – Eastern Region; 518-817-1161

Jared McDunkin – Central Region

Patt Dorsey – Western Region



GOLDEN, COLLINS INTRODUCE BIPARTISAN LEGISLATION TO SUPPORT LOGGERS HARMED BY NATURAL DISASTERS

Washington, D.C., May 8, 2024 — Congressman Jared Golden and Senator Susan Collins today introduced the bicameral, bipartisan Loggers Economic Assistance and Relief Act, which would establish a new U.S. Department of Agriculture program to support loggers who have lost income due to natural disasters.

Congressman Pete Stauber (MN-08) is the lead co-sponsor in the House. Senator Angus King (I-ME) and Congresswoman Chellie Pingree (ME-01) are cosponsors of the legislation.

Current law excludes loggers from the kinds of disaster relief and assistance available to other industries, including fishermen and farmers, when natural disasters strike. Under the Loggers Economic Assistance and Relief Act, a disaster declaration from the president or respective governor would unlock federal assistance eligibility for logging businesses with at least a 10 percent loss in revenue or volume compared to the prior year. Covered damage would include high winds, fire, flooding, insect infestation and drought.

“Loggers have faced a series of unrelenting challenges in recent years, and uneven access to disaster assistance is among the most artificial,” said Golden, who authored the legislation. “These businesses are pillars for some of Maine’s most rural communities, and we simply cannot afford to lose them. Protecting these jobs ensures that future generations can continue to make a consistent living in the woods. I’m grateful to have so many of my colleagues join this important effort.”

“Throughout Maine’s history, our forest products industry has supported good-paying jobs, driven local economies and strengthened rural communities,” said Senator Collins.



“Loggers were already facing significant headwinds due to a changing 21st century economy and recent price instability, and the recent damaging storms only compounded those challenges. This bipartisan legislation would provide much-needed financial support to loggers who have suffered losses as a result of natural disasters.”

“In Minnesota’s Eighth Congressional District, our forest products industry has created good-paying jobs and driven our local economies,” Stauber said. “Unfortunately, this crucial industry is currently facing a wide variety of threats, from wildfires and drought to insect infestation. Minnesota’s loggers have supported our communities for generations and it is now our turn to support them. That’s why I am proud to introduce legislation with my friend, Congressman Jared Golden, to establish a new program through the USDA that will provide financial assistance to timber harvesting and timber hauling businesses that have seen their bottom line impacted by natural disasters. I look forward to seeing this legislation help ensure Minnesota’s forest products industry remains strong and resilient.”

Last December, Maine’s logging industry lost \$2.6 million after particularly damaging winter weather. A survey released by the Professional Logging Contractors of the Northeast in January found that more than 90 percent of the industry’s businesses suffered damage to equipment or logistics from the December 18 storm alone. In total, Maine’s economy lost \$5.5 million due to the loss in logging revenue and productivity.

“Logging has been fundamental to the success of our state for centuries — creating good jobs, supporting working families and providing essential economic activity across rural areas,” said Senator King. “The Loggers Economic Assistance and Relief Act would ensure that any disaster declaration by the President or Maine’s governor would unlock federal disaster assistance eligibility for these critical Maine businesses. As a new generation of Maine people consider careers in logging, and as we see the catastrophic impacts of these storms, this bill will ensure that the logging industry remains a stable source of income — and our state’s culture — for generations to come.”

“The logging industry is a critical pillar of Maine’s economy and history, supporting jobs and rural communities for centuries. Several recent devastating storms in our state highlighted the urgent need to address gaps in our federal disaster response and support for loggers,” said Pingree, a member of the House Agriculture Committee. “By establishing a new program within the Department of Agriculture to support loggers facing losses due to natural disasters, our bipartisan, bicameral Loggers Economic Assistance and Relief Act will help this vital industry survive whatever future storms or challenges may come.”

Logging industry leaders praised the bipartisan legislation:

Dana Doran, executive director of the Professional Logging Contractors of the Northeast: “Northeast logging contractors have been hit hard with an unprecedented series of weather challenges over the past eighteen months. This has triggered expanded state regulations, which impede harvesting and hauling for long periods of time. While this has created an environmental success story, it has also created an economic disaster due to no fault of the logging community. As a result of these challenges, we have discovered there is no federal relief for logging and trucking companies due to natural disasters. We want to thank Congressmen Golden and

Senator Collins for leading this effort to secure relief for these hard-working small family businesses, and we urge swift passage to provide relief and finally treat logging and trucking the same as farming for the first time in history.”

Scott Dane, executive director of the American Loggers Council: “The timber/forest industry is a commodity-based sector similar to farming. Loggers are farmers of the forests. They are included in the U.S. Department of Agriculture, within the U.S. Forest Service. However, unlike all other agriculture-based commodities, loggers have no support when their “crop” is damaged or destroyed by natural disasters such as hurricanes, wildfire, floods, disease, and drought. This legislation will provide assistance to loggers impacted by natural disasters by providing the same type of assistance that all other agricultural sectors receive. The American Loggers Council commends Congressmen Golden and Stauber and Senator Collins for sponsoring and introducing this bipartisan legislation.”



SCTPA MEMBER BENEFIT & SERVICE



MICHELIN & B. F. GOODRICH TIRE SCTPA MEMBER DISCOUNT PROGRAM

SC Timber Producers Association is proud to offer this Member Benefit Program. SCTPA has partnered with Michelin and B. F. Goodrich (BFG) to offer ACTIVE dues paid members the opportunity to save money on tires through this program.

SCTPA President Crad Jaynes said, "SCTPA is pleased and proud to partner with Michelin North America to offer this valuable and cost saving opportunity for our members. Our members are always our first priority and when our association can provide a cost saving program like this, it is a "win" for everyone. I appreciate Michelin partnering with us in this program."

This program is available to ALL active dues paid members in all SCTPA member categories. Members are able to visit any local Michelin dealer. Program requires an application be completed and the use of a credit or debit card.

MEMBER PROCESS FOR SCTPA MICHELIN & BFG TIRE PROGRAM

1. Contact SCTPA to receive active member number, membership period and member status (logger, wood dealer, etc.).
2. Must be an Active Dues Paid SCTPA Member.
3. Interested SCTPA members should reach out to your local Michelin Tire Dealer.
4. Contact Michelin's Sharon Warner, 386-479-1169, email sharon.warner@michelin.com to receive an application. Sharon will ask questions regarding number of tires to be purchased, who pays and how.
5. Sharon Warner will verify active membership with SCTPA's Crad Jaynes.
6. Once application is verified, it will be sent to Michelin for approval.
7. Michelin will provide the customer with a Bill To and Ship To Number. At that time, the member will have to Register their account at **Michelinb2b.com** and upload the member's Credit or Debit Card.
8. Program available to ALL members registered as active dues paid SCTPA members.
9. Program available for Michelin and B.F. Goodrich tires. Tires available are Truck, Light Truck, Passenger Car & Agricultural, Industrial & Off Road Tires & Retreads.
10. Once a member is registered on Michelinb2b.com, member will have access to all their purchase reports and tire pricing.
11. Members can go to any Michelin dealer to purchase tires.
12. Tires cannot be ordered online or shipped to the customer. Must go through a Michelin dealer.

SCTPA is pleased to offer our members this tire discount program on the high quality tire products offered by Michelin Tire and B. F. Goodrich Tires. Should a member have any questions, feel free to contact Sharon Warner or SCTPA.

9-8-23

Please contact our
endorsed SC Timber
Producers Association
broker - Mark Snelson
(843)325-1211
msnelson@sc.rr.com

Our Mission | To revolutionize what EMPLOYER GROUPS expect from their Agency.

A Revolutionary New Experience

We feel that groups in today's complex and constantly changing environment need more than simply proposals and service. We understand that you are expected to sometimes be a lawyer, accountant and human resources department all at once, and we've expanded our portfolio of services to include things to help you wear all those hats.

Here are some of the cool things we are doing very, very well.

Online Benefit Enrollment Tool

Enroll and manage your entire employee benefits package online—no more paper forms!

Customized Benefit Booklets

We create a customized professional benefit booklet for you. They run the full gamut of all the benefits that your group offers their employees.

ERISA WRAP Documents

That's right, we will complete the ERISA WRAP Documents, and have the full Summary Plan Descriptions (SPDs) including mandated ERISA language ready for your group to distribute to employees.

Full Online HR Library

Easily share our HR Library with your employer groups and can assist them with such areas as OSHA, ERISA, COBRA, Immigration, Taxation and more.

Think

RateFactory

employee
NAVIGATOR

Quoting Tool

Send us a small group census and we'll send you quotes back from every fully insured carrier available in your market in one concise, easy to read spreadsheet.

1094 Completion and Distribution

We take the burden off the HR administrators by providing all forms ready to distribute to the employees of your insured groups, as well as signature ready employer tax forms. All your customers have to do is distribute them to their employees, sign the corporate form and mail to Uncle Sam.

ACA Compliance

Our software tracks and maintains your plan to make sure that you are hitting the required governmental benchmarks.

Our Carriers



ATTENTION SC Timber Producers Association Members!! Our exclusive broker, **Mark Snelson** is here to help you with all of your Medicare needs. Please contact him at:

(843)325-1211 or msnelson@sc.rr.com

Medicare Supplement Plans from BlueCross BlueShield of South Carolina



Medicare alone won't pay for all your expenses. We can help you fill the gap! Call **Mark Snelson** at **(843)325-1211**. Mark is an authorized agent for BlueCross BlueShield of South Carolina, an independent licensee of the Blue Cross and Blue Shield Association.

KNL HOLDINGS, LLC



WORKING TOGETHER TO MEET THE NEEDS OF THE TIMBER INDUSTRY FOR OVER 50 YEARS!



OPEN TOP CHIP INWOODS CHIP LIVE FLOORS

IN S.C. PLEASE CALL 803-951-3965 OR VISIT US AT:
1988 TWO NOTCH ROAD, LEXINGTON, SC 29073

www.crtsinc.com



STATESVILLE, NC

RALEIGH, NC

ASHLAND, VA

ROANOKE, VA



Timber Talk

*Your Voice for South Carolina
Timber Harvesting*

Contact Crad Jaynes at
1-800-371-2240 or bcjpaw@windstream.net



Mark Your Calendar

July 2024

24 – 26 American Loggers Council Summer Board of Directors Meeting, Butte, MT.

August 2024

8 – 9 Forestry Insurance Company of the Southeast Board Meeting and Logger Technology Summit, Marriott Convention Center, Augusta, GA.
 22 Timber Operations Professional (TOP) Initial Training Class, SC Forestry Commission Headquarters, Columbia. Contact Guy Sabin at Forestry Association of SC to Register, 803-798-4170.
 29 SCTPA Board of Directors Meeting, 10:00 a.m., Hampton Inn Harbison, Columbia.

September 2024

10 SFI State Implementation Committee Meeting, 10 a.m., SC Forestry Commission Headquarters, Columbia.

SCTPA is available to those needing to view the 2024 SFI Timber Operations Professional (TOP) Update Video to continue to be SC SFI Trained for the July 1, 2023 – June 30, 2024 period. Contact SCTPA and a group live class or individual live class can be arranged.

District Meeting dates are subject to change. Meeting notices will be mailed, posted on SCTPA Facebook page and listed on the website www.scloggers.com prior to scheduled meeting.

Members & Non-Members are encouraged to attend our district meetings to know what the issues are affecting the industry.

Need SFI Trained DVD Class or other training?

SCTPA can provide the New DVD Training Module for SFI Trained status. SCTPA is an approved DVD training class facilitator and will be scheduling classes during the year. Other training programs are available for safety, driver training, equipment lockout & tagout, hazardous materials spill control on logging sites and forestry aesthetics.

Truck Driver Training Workshops will be scheduled. Watch the Mark Your Calendar section of this newsletter for dates.

Notices for SCTPA workshops & events will be forwarded.

Crad Jaynes
President & CEO
SCTPA

PO Box 811, Lexington, SC 29071
 800-371-2240 Fax: 803-957-8990
bcjpaw@windstream.net

Kathy Fudge
Communications Director
SCTPA

PO Box 811, Lexington, SC 29071
 803-608-3357
khfudge@gmail.com

SCTPA Board of Directors

Chairman: Joseph "BoBo" Seckinger
 Seckinger Forest Products, Inc.
 Hampton
 Cell 803-571-0019

Vice Chairman: Josh Key
 Beech Island Timber & Construction, Inc.
 Jackson
 Cell 803-507-8995

Secretary-Treasurer: Griff Wilson
 WilRidge Forestry, LLC
 Chester
 Cell 803-209-3053

Danny McKittrick
 McKittrick Timber, LLC
 Heath Springs
 Cell 803-320-1739

Colby Crosby
 Crosby Logging & Timber, Inc.
 Ridgeland
 Cell 843-321-1432

Buddy Lominick
 Big Pine Logging
 Newberry
 Cell 803-940-6138

Ron Poston
 Ronnie L. Poston Logging, Inc.
 Hemingway
 Cell 843-558-9309

Tommy Barnes
 Ideal Logging, Inc.
 Edgemoor
 Cell 803-385-7994

Carey "Buster" Harrison
 Harrison Forest Products, Inc..
 Round O
 Cell 843-908-0085

Bob Lussier
 Great Woods Companies, LLC
 Bennettsville
 Cell 860-377-5318

John Rice
 Rice Land & Timber, LLC
 Allendale
 Cell 803-259-6202

Crad Jaynes
President & CEO



PO Box 811

Lexington, SC 29071

800-371-2240

803-957-8990

bcjpaw@windstream.net

*The **only** insurance agency
endorsed by and supporting
your Association.*

*The South Carolina Timber
Producers Association*

Representing the leading logging insurance carriers
including the only logger owned carrier Forestry Insurance
Company of the South East

Commercial Auto • Workers Compensation • Equipment Marine
• General Liability • Excess Liability • Property

The leader in the Fleet Management Practices
Contact: Jeremy Barclay, David Hayes, Michelle Hopkins
and Rick Quagliaroli

Swamp Fox Agency

P.O. Box 1318 • Moncks Corner, South Carolina 29461
843-761-3999 • Toll Free: 888-442-5647



*"Serving the Forestry Industry
For Over 35 Years."*



Our Mission

The Mission of the South Carolina Timber Producers Association is to serve as the voice for timber harvesting and allied timber businesses to advance the ability of its members to professionally, ethically, efficiently, safely, environmentally and profitably harvest, produce and transport timber to meet the timber supply demands of our state by providing continuing educational and training opportunities, distributing timber harvesting, hauling, manufacturing and selling information, representing our members in national and statewide legislative activities, and aggressively promoting, supporting and conducting programs of state, regional and national advocacy.